



X SERIES

FEATURES

*Features for the
X Series include:*

- Limited Lifetime Warranty
- Legendary Martin® Tone
- Wood Fiber Composite Laminate Body Construction
- A Sitka Spruce Top is Featured on Specified Models
- Patented Neck Mortise
- Equipped with Martin® Strings

Martin & Co.
EST. 1833
AMERICA'S GUITAR®

Martin DCX1RE

X SERIES

Steel-String Acoustics | Acoustic Electrics
D-Dreadnought



DXM

Spruce Top¹
Mahogany¹

MODEL NOT SHOWN:

DXME

Spruce Top¹
Mahogany¹
with Onboard Electronics

DCX1E

Solid Spruce Top
Mahogany¹ Cutaway
with Onboard Electronics

MODEL NOT SHOWN:

DCX1RE

Solid Spruce Top
Rosewood¹ Cutaway
with Onboard Electronics

Solid Spruce

DX1R

Solid Spruce Top
Rosewood¹

MODELS NOT SHOWN:

DX1E

Solid Spruce Top
Mahogany¹
with Onboard Electronics

DX1

Solid Spruce Top
Mahogany¹

DXK2

Hawaiian Koa¹

MODELS NOT SHOWN:

DX1K

Solid Spruce Top
Hawaiian Koa¹



DCX1KE
Solid Spruce Top
Hawaiian Koa¹ Cutaway
with Onboard Electronics



DCXEBLACK
Black Cutaway
with Onboard Electronics

Martin Guitar has long recognized the serious nature of the earth's dwindling resources and has focused attention on alternative materials. We are also committed to designing Martin guitars that are within reach of every aspiring guitarist. Martin's breakthrough X Series guitars were designed to meet both of these needs! The X Series guitars are constructed with a combination of highly compressed wood fibers (high-pressure laminate, abbreviated as HPL) and traditional tonewoods. Martin has found HPL to be an extremely durable and workable material. We have crafted ways to build traditional Martin shapes with HPL that yield incredibly long-lasting, affordable guitars. Most importantly, we've managed to build them so they possess the "famous" Martin sound and playability found in our more expensive guitars.

¹ Wood grain image photographically reproduced on wood fiber composite laminate.

Martin & Co.
EST. 1833
AMERICA'S GUITAR[®]

X SERIES

Steel-String Acoustics | Acoustic Electrics

D-Dreadnought

000-Auditorium



D12X1 (12 String)

Solid Spruce Top
Mahogany¹



000CXEBLACK

Black Cutaway
with Onboard Electronics



000X1

Solid Spruce Top
Mahogany¹

OM-Orchestra



OMCXC2E

Hawaiian Koa¹ Cutaway
with Onboard Electronics and Tuner

00-Grand Concert



00CXAEBLACK

Black Cutaway
with Onboard Electronics

C. F. Martin & Co. has vigorously researched and implemented alternative materials that are well suited for guitars, among them:

-  Patented high pressure laminates (HPL) for the popular X Series and Little Martin guitars
-  Aluminum tops for the ALternative X models
-  Stratabond laminate for neck construction
-  Micarta, a unique fiber laminate, for fingerboards and bridges

¹ Wood grain image photographically reproduced on wood fiber composite laminate.

Onboard Electronics



CLASSIC 4™

The Fishman Classic 4 system offers quality sound and versatile tone shaping.

- ◆ Equipped with Fishman's Sonicore coaxial under-the-saddle pickup.
- ◆ Provides slider controls for volume, bass, mid and treble.
- ◆ Features a brilliance control that can add crispness to your tone or can be used to reduce finger noise and fret buzz.
- ◆ Battery access from outside of the instrument.
- ◆ Low battery LED with estimated 300 hours of continuous use.



CLASSIC 4T™

The Fishman Classic 4T system adds a convenient digital chromatic tuner to the versatile Classic 4 package.

- ◆ Equipped with Fishman's Sonicore coaxial under-the-saddle pickup.
- ◆ Provides slider controls for volume, bass, mid and treble.
- ◆ Brilliance control that can add crispness to your tone or can be used to reduce finger noise and fret buzz.
- ◆ Digital chromatic tuner can be utilized plugged/unplugged.
- ◆ External battery access.
- ◆ Low battery LED with estimated 300 hours of continuous use.



PREFIX PRO™

The Fishman Prefix Pro system is an instrument-mounted pickup/preamp system that offers total control of your amplified guitar sound.

- ◆ The proprietary technology of the Gold Plus pickup provides superb string-to-string balance and sensitivity to both strings and the top of the instrument.
- ◆ Provides volume, bass, mid and treble control.
- ◆ Contour and frequency control provides semi-parametric equalization of the instrument's midrange tone.
- ◆ Phase switch can be used as an immediate feedback suppressor or tone device.
- ◆ Notch filter is a fixed level, variable frequency filter for eliminating feedback.
- ◆ Flip-top battery compartment for easy access.
- ◆ Low battery LED with estimated 160 hours of continuous use.

X Series Steel-String Acoustics | Acoustic Electrics

Model Specifications

		DXM	DXME	DXK2	DCXEBLACK	000CXEBLACK	00CXAEBLACK	OMCXK2E
MODEL/TYPE	D-DREADNOUGHT 000-AUDITORIUM 00-GRAND CONCERT OM-ORCHESTRA	•	•	•	•	•	•	•
CUTAWAY	VENETIAN				•	•	•	•
ELECTRONICS	FISHMAN® CLASSIC 4 SONICORE FISHMAN® PREFIX PRO FISHMAN® CLASSIC 4T		•		•	•	•	•
TOP	HPL SPRUCE ¹ HPL HAWAIIAN KOA ¹ HPL COLOR (BLACK)	•	•	•	•	•	•	•
ROSETTE	HERRINGBONE DECAL	•	•	•	•	•	•	•
TOP BRACING	X-SERIES "X" BRACING	•	•	•	•	•	•	•
BACK AND SIDES	HPL MAHOGANY ¹ HPL HAWAIIAN KOA ¹ HPL COLOR (BLACK)	•	•	•	•	•	•	•
NECK	STRATABOND	•	•	•	•	•	•	•
NECK SHAPE	MODIFIED LOW OVAL	•	•	•	•	•	•	•
HEADPLATE	HPL MAHOGANY ¹ HPL HAWAIIAN KOA ¹ HPL COLOR (BLACK)	•	•	•	•	•	•	•
TUNING MACHINES	CHROME ENCLOSED	•	•	•	•	•	•	•
PICKGUARD	TORTOISE COLOR	•	•	NONE	NONE	NONE	NONE	NONE
TOTAL LENGTH	40-1/2"	•	•	•	•	39 ¹³ / ₁₆ "	38 ⁵ / ₈ "	39 ¹³ / ₁₆ "
BODY LENGTH	20"	•	•	•	•	19 ³ / ₈ "	18 ⁷ / ₈ "	19 ³ / ₈ "
BODY WIDTH	15-5/8"	•	•	•	•	15"	14 ⁵ / ₁₆ "	15"
BODY DEPTH	4-7/8"	•	•	•	•	4 ¹ / ₈ "	3 ¹ / ₄ "	4 ¹ / ₈ "
SCALE LENGTH	25.4"	•	•	•	•	•	•	•
FRETS	14/20 (CLEAR/TOTAL)	•	•	•	18/20	18/20	18/20	•
FGBD WIDTH	1-11/16" (AT NUT)	•	•	•	•	•	•	1 ³ / ₄ "
OPTION	HARDSHELL CASE AVAILABLE	•	•	•	•	•	•	•
OPTION (NO COST)	LEFT-HAND VERSION	•	•	•	•	•	•	•

X Series Steel-String Acoustics | Acoustic Electrics

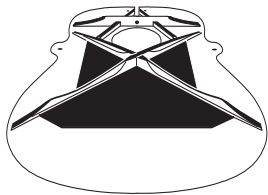
Model Specifications

KEY:

■ Solid Spruce Top

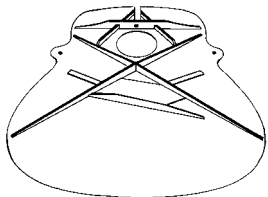
¹ Wood grain image photographically reproduced on wood fiber composite laminate.

BRACING PATTERNS:



X-Series "X" Bracing

Used on HPL tops. Balances spruce X bracing with graphite plates to achieve the ultimate in tone and stability.

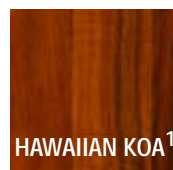
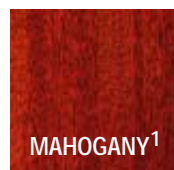
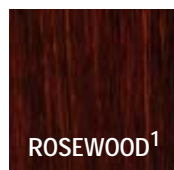


A-Frame "X" Bracing

Patented A-frame adds strength to the top. Angled bridge plate creates a "Box" under the bridge.

		DX1	DX1E	D12X1	DX1R	DX1K	DCX1E	DCX1KE	DCX1RE	000X1
MODEL/TYPE	D-DREADNOUGHT 000-AUDITORIUM	•	•	•	•	•	•	•	•	•
CUTAWAY	VENETIAN						•	•	•	
ELECTRONICS	FISHMAN® CLASSIC 4 SONICORE		•				•	•	•	
TOP	SOLID SPRUCE	■	■	■	■	■	■	■	■	■
ROSETTE	INLAID BLACK & WHITE W/RED FIBER	•	•	•	•	•	•	•	•	•
TOP BRACING	A-FRAME "X" BRACING	•	•	•	•	•	•	•	•	•
BACK AND SIDES	HPL ROSEWOOD ¹ HPL MAHOGANY ¹ HPL HAWAIIAN KOA ¹	•	•	•	•	•	•	•	•	•
NECK	STRATABOND	•	•	•	•	•	•	•	•	•
NECK SHAPE	MODIFIED LOW OVAL LOW PROFILE	•	•	•	•	•	•	•	•	•
HEADPLATE	HPL MAHOGANY ¹ HPL ROSEWOOD ¹ HPL HAWAIIAN KOA ¹	•	•	•	•	•	•	•	•	•
FINISH TOP	HAND-RUBBED URETHANE	•	•	•	•	•	•	•	•	•
TUNING MACHINES	CHROME ENCLOSED	•	•	•	•	•	•	•	•	•
PICKGUARD	TORTOISE COLOR	•	•	•	•	•	•	•	•	•
TOTAL LENGTH	40-1/2"	•	•	41 3/4"	•	•	•	•	•	39 13/16"
BODY LENGTH	20"	•	•	•	•	•	•	•	•	19 3/8"
BODY WIDTH	15-5/8"	•	•	•	•	•	•	•	•	15"
BODY DEPTH	4-7/8"	•	•	•	•	•	•	•	•	4 1/8"
SCALE LENGTH	25.4"	•	•	•	•	•	•	•	•	•
FRETS	14/20 (CLEAR/TOTAL)	•	•	•	•	•	18/20	18/20	18/20	•
FGBD WIDTH	1-11/16" (AT NUT)	•	•	1-7/8"	•	•	•	•	•	•
OPTION	HARDSHELL CASE AVAILABLE	•	•	•	•	•	•	•	•	•
OPTION (NO COST)	LEFT-HAND VERSION	•	•	•	•	•	•	•	•	•

WOOD GRAIN IMAGES:



¹ Wood grain image photographically reproduced on wood fiber composite laminate.



P.O. Box 329, Nazareth, Pennsylvania 18064
(610) 759-2837

Visit our website | www.martinguitar.com

The warranty for any model covered by the Martin® Limited Lifetime Warranty is not transferable; any model covered by the Martin Limited Lifetime Warranty is warranted only to the original owner for his or her lifetime when purchased from an authorized Martin dealer in the United States and Canada. Factory-installed electronics on any model covered by the Martin Limited Lifetime Warranty are warranted for a period of one year from the date of original purchase.

EFFECTIVE SEPTEMBER 2006 © 2006 C. F. Martin & Co., Inc. All rights reserved.

"C.F. Martin & Co., Est. 1833," "Martin" and "America's Guitar" are trademarks used by C. F. Martin & Co., Inc. "Fishman" and "Prefix Pro" are trademarks or tradenames of Fishman Transducers, Inc. Model specifications subject to change without notice. Visit our website at martinguitar.com for the most current product information. Printed in the USA on recycled paper. 0608-07 **17MS100**